

## Grace Cottage Named a Best Place to Work in Vermont

All of us at Grace Cottage are pleased and proud to have been named one of the Best Places to Work in Vermont in 2023! This statewide survey and awards program was designed to identify, recognize, and honor the best places of employment in Vermont. This award recognizes Grace Cottage's policies and practices, with a primary focus on employee satisfaction. Grace Cottage Family Health & Hospital would not be eligible for this award without our incredible group of loyal, dedicated, compassionate, and hard-working employees. There were 57 companies in Vermont named, but Grace Cottage was the only hospital to receive this esteemed title! The following statements are a representative sample of overall comments we received from employees who answered the survey anonymously:

- We have a culture of kindness to both patients and to staff.
- Care of the patient is important to staff, and the amount of time allotted to do that is honored.
- It's a family-oriented environment, and our work is very valuable and valued by the community.
- The attitudes shared by co-workers and administration reflect optimism and collaboration. There is genuine kindness, compassion, and respect.
- The people are amazing. The organization encourages increased time spent with patients.
- There is transparency with administration and staff, with a collegial environment.



Chief Nursing Officer Lisa Eaton, Human Resources Director Jen Newman, and CEO Doug DiVello, traveled to Burlington in March to accept the Best Place to Work in Vermont award, pictured here with Lindsay Kurrle, Secretary of the Vermont Agency of Commerce and Community Development (far left) and Susan Springer, Vice President, Custom Projects, Workforce Research Group (far right).

## Emergency Department Expansion on Schedule

Our Emergency Department addition is on track to open in mid-June, if the two sets of large glass doors arrive as scheduled. Meanwhile, our Emergency Department continues to be open and very busy, throughout the construction. We thank all of our Emergency Department patients and our employees for their patience as we work our way through this very important expansion.



## Update on Plans for New Clinic

The number of patients choosing to receive personal and professional primary care at Grace Cottage has been growing exponentially (over 31,000 patient visits in our Rural Health Clinic annually, up from 20,000 visits just five years ago). With 13 primary care and mental health providers at Grace Cottage Family Health, and more than 50 support staff in the clinic, including schedulers, receptionists, and nurses, the two houses in which the clinic is located have been well-utilized over the years - yet were not built for this purpose. Although the houses, built in the 1840s, are quaint and charming, it's clear that they're inefficient and insufficient. Patients and providers navigate a maze of meandering hallways; heating and cooling are problematic; space is at a premium.

Thanks to a \$5 million pledge from generous donors, we have spent the last 18 months on systematic planning for a new clinic. To be located just north of the existing clinic on Route 35, construction of this building, projected to cost \$20 million, will ensure that Grace Cottage Family Health can serve patients well into the future.

We have applied for a Certificate of Need (CON) from the Green Mountain Care Board (Vermont's regulatory body for hospitals), and we are conducting the work needed to apply for an Act 250 permit (Vermont's land use and development law, administered by the National Resources Board and the District Environmental Commission). We will keep our patients and our community fully informed as we continue moving forward.

### A grateful patient writes:

"I loved how the staff took care of me. I was treated like a queen! The staff was polite, friendly, and caring."

— Dixie Graham, Peru, VT

# A Word From the CEO

As you can see from reading this issue of Cottage Door, there's lots of good news to report. The Best Place to Work Award (we were the only hospital in the state of Vermont to win this year) is an accomplishment of which we are very proud especially since, for so very many reasons, healthcare is such an incredibly challenging profession. We do all that we can, here at Grace Cottage, to support our employees so that they, in turn, can support our patients. Testimonials such as this one from a gentleman in Brattleboro warm our hearts and mean so much to everyone here: *"The kindness and love shown to me completely boosted my healing. At Grace Cottage, the patient is not treated as an object to be poked, prodded, and pushed, but a partner in the plan to get better. It's extraordinary!"*

But we never rest on our laurels; we're constantly striving to do better, and to be better, for our patients. Our Emergency Department expansion is almost complete, and the improvements that this will bring about in patient privacy, comfort, efficiency of care, and safety will be noticeable. We want to thank all who helped to make this project possible – it's been designed and constructed thanks entirely to the \$660,000 in donations received for this purpose.

As we finish up the Emergency Department expansion, we're in the process of planning a much larger and very necessary project – the construction of a new 23,000 sq.-ft. Family Health Clinic. The number of patient visits in the clinic annually has grown tremendously over the past five years ago to more than 31,000 visits this year. Our clinic is currently located in two houses that were built in the 1840s, with winding hallways, several entrances, insufficient insulation, and other aches and pains associated with old houses. The clinic is quaint and charming, but inefficient – offering no opportunity to grow for the future. A new clinic will be transformative for patient care in our community – we'll still be providing our special brand of personal and professional care, but in a space that gives us the ability to respond to the current and future needs of our community.

– Doug DiVello, President & CEO

Grace Cottage CEO Doug DiVello e-mails an informative Message to the Community once a month. To receive this communication, send an e-mail to [info@gracecottage.org](mailto:info@gracecottage.org) with the subject line "Add me to your Message to the Community."



## Grace Cottage Hospital Recognized as 'Age-Friendly'



**Committed to  
Care Excellence  
for Older Adults**

Grace Cottage Hospital has been recognized by the Institute for Healthcare Improvement (IHI) for implementing a set of evidence-based interventions specifically designed to improve care and has been applauded for being "a leader in this rapidly growing movement committed to care of older adults."

Grace Cottage is the only Vermont hospital that has achieved Level 2 recognition from the IHI, joining an international group of more than 2,900 health systems applying the "Age-Friendly" approach to tailor care to patients' goals and preferences so that care is consistently of the highest quality. Both Grace Cottage Family Health and Grace Cottage Hospital join 909 facilities in the United States that have achieved the more advanced Level 2 recognition: "Committed to Care Excellence."

"The integration of the Age-Friendly approach into our inpatient care is the perfect way to align that care with what matters most to our older adults," said Grace Cottage's Chief Nursing Officer Lisa

Eaton. "This model truly ensures that our multidisciplinary team is setting goals for our patients by looking through the lens of what matters to the individual."

The IHI designation is based on a review of Grace Cottage Hospital's patient care in four main areas, called the 4Ms: What Matters, Medication, Mentation, and Mobility. Grace Cottage Hospital has proven that it provides patient-centered care, guided by what is most important to the individual patient (What Matters). It also aims to prevent, identify, treat, and manage dementia, depression, and delirium (Mentation), and to encourage older adults to move safely every day (Mobility). When medication (the 4th M) is necessary, Grace Cottage Hospital providers choose medicines and dosages with the least impact on the other 3Ms.

The "Age-Friendly" designation is an initiative of The John A. Hartford Foundation and IHI, in partnership with the American Hospital Association and the Catholic Health Association of the U.S. The aim is to provide guidance and recognition for healthcare institutions seeking to provide the best "age-friendly" care for older adults.

### Cottage Door

is published by Grace Cottage Family Health & Hospital  
185 Grafton Rd. (Route 35) Townshend, VT 05353  
(802) 365-7357 | [info@gracecottage.org](mailto:info@gracecottage.org) | [gracecottage.org](http://gracecottage.org)

Grace Cottage Hospital & Grace Cottage Foundation are 501(c)(3) nonprofit organizations. The mission of Grace Cottage Foundation is to raise funds on behalf of Grace Cottage.

Donations to Grace Cottage Foundation are tax deductible to the extent allowable by law. Grace Cottage Foundation's Federal Tax ID # is: 03-0343282.

Donations may be made by cash, credit card, check, stocks, bonds, or other tangible assets.  
Call Andrea Seaton or Charma Bonanno at (802) 365-9109.

### A grateful patient writes:

"I recently asked many of the nurses providing care to my mom, 'How does Grace Cottage find so many compassionate and wonderful nurses to work here?' Their replies were: 1) We love our jobs, and 2) Grace Cottage treats us well! I am so thankful that they are here!" – Peggy Hanson, Arlington, VT





## Employee Milestones

### 25 YEARS

Siobhan Eddy Young, *Rehabilitation*  
Patrick Lapan, *Materials Management*

### 15 YEARS

Betsy Miller, *Finance*

### 10 YEARS

Dr. Ewa Arnold, *Hospitalist*  
Jim Martis, *Foodservice*  
Melissa Walker, *Rehabilitation*

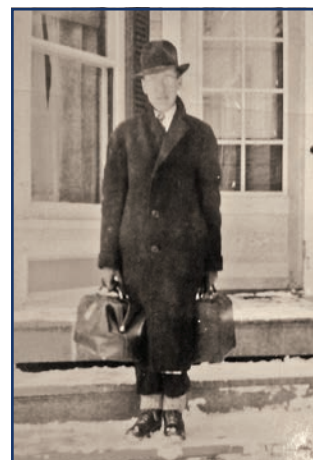
### 5 YEARS

Dr. Anne Brewer, *Family Health*  
Shaley Bush, *Pharmacy*  
Margaret Canal, *Family Health/Foodservice*  
David Cross, *Diagnostic Imaging*  
Nicole DeBlois, *Nursing*  
Doug DiVello, *CEO*  
Diane Forester, *Diagnostic Imaging*  
Stephanie Forgues, *Diagnostic Imaging*  
Kayla Gray, *Family Health*  
Blythe Kersula, *Nursing*  
Rebecca Lapointe, *Nursing*  
Tyler Madison, *Information Services*  
Alice Muise, *Nursing*  
Melany Nupp, *Family Health*  
Brian Robinson, *Facilities*  
Lindsey Smith, *Rehabilitation*

## Looking Back In Time

As we approach Grace Cottage's 75th anniversary next year, we thought it would be fun to share anecdotes from the past in each issue of Cottage Door. Here's one from many decades ago, from our founder, Dr. Carlos Otis:

"I got a call to go way over to Goose City in [East] Dover. It was spring, it was muddy, and I had one of the old high-clearance cars. I went to see a lady who was having a stroke. I got to within a mile of there and got mired down in the mud. Carrying my bag, I walked the rest of the way to the house and took care of the lady. I also took care of the whole family, calmed them down, and gave them some medicine. Then they wanted to know how much they owed me. I said, 'Six dollars'. So the man of the house paid me six dollars, and then he got his team ready to go down the hill and pull my car out of the mud and get it turned around. Then he said to me, 'That'll be eight dollars'."



Dr. Otis making a house call in the mid-1900s.



## Wishes Granted...

- Leonard Bugel made a donation for the purchase of a variety of items used by the Dietary Department to prepare patient meals.
- Elaine Lambert Klein and John Klein donated the funds for the purchase of a nasal cannula for the Emergency Department.
- Steve and Kathy Squires made a donation for the purchase of paring knives and a dietary scale.
- Ray & Patty Levesque donated the funds for the purchase of a variety of items for the Dietary Department.
- An anonymous donor donated the funds for the purchase of a variety of items for the Rehab Department, including a total body trainer, a treatment table, and a hand therapy table.



## Wishes Made...

- The Dietary Department needs a stainless-steel prep table for food preparation. \$799.
- The Rehab Department needs a heat gun for custom splinting of orthotics, for \$176, and a massage gun for percussive treatment. \$400.
- There's a bedroom on campus for members of the Radiology Department when they are "on call", but the beds that they sleep on don't suit everyone. We'd love to provide a Sleep Number bed, so firmness can be adjusted for a good night's sleep. \$1,599.
- Two Re-Turn assistive devices are needed to help patients, nurses, and rehab staff in the hospital as patients transfer from sitting on the edge of their beds to standing. \$710 each.
- An additional "Blue Streak" wheelchair is needed for Outpatient Rehab. \$160.
- The Dietary Department would like non-skid trays. These trays help keep plates, cups, and utensils from sliding around on patient trays. \$348 for a case of 12 trays.

Grace Cottage's Wish List is updated monthly on our website, at [gracecottage.org](http://gracecottage.org), or call (802) 365-9109 for more information.

## A grateful patient writes:

"I was overwhelmed with gratitude for everyone who helped care for me when I was an inpatient at Grace Cottage. The kindness and love shown to me completely boosted my healing. At Grace Cottage, the patient is not treated as an object to be poked, prodded, and pushed, but a partner in the plan to get better. It's extraordinary." — *Stephen Stearns*, Brattleboro, VT

## Cabin Fever Online Auction

Thanks to generous businesses and individuals that donated 154 items, and 250 active bidders, Grace Cottage's Online Cabin Fever Auction in February raised almost \$30,000 for our Patient Care Fund, helping us to take care of our community. We appreciate all who support Grace Cottage in this way! Many bidders commented that they greatly appreciated the variety of items, which ranged from \$15 to \$10,000, and included artwork, trips, gift certificates, jewelry, furniture, clothing, and much more. Stay tuned for next year's Cabin Fever Auction – it's a great way to beat those mid-winter blues!

## New Event in 2024

Plans are shaping up for a new family-friendly event on Saturday, March 2, 2024! Grace Cottage will host the first annual Snowshoe/Cross-Country Ski event on this date at the Nordic Center at Stratton Resort. Participants will be able to choose whether they'd like to snowshoe or cross-country ski on the Nordic Center's beautifully groomed trails and enjoy treats and a bonfire. Please mark your calendars and plan to join us!



## 14th Annual Tee It Up For Health Golf Tournament Saturday, June 10, Haystack Golf Club in Wilmington

We're excited to be "back at the 'Stack" this year and we have just a few team slots left, so call us at 802-365-9109 or e-mail [info@gracecottage.org](mailto:info@gracecottage.org) if you're interested in joining us and 120 other golfers, in support of Grace Cottage's Patient Care Fund.

Thank you to our Sponsors to date, including:

**EVENT SPONSORS:** The Richards Group; Haystack Golf Club

**HOLE-IN-ONE SPONSOR:** Brattleboro Subaru

**PLATINUM SPONSORS:** Coverys, M&T Bank, Elizabeth Walker

**SILVER SPONSORS:** 802 Credit Union, Andy & Linda Barber, Linda Bastian, Brattleboro Memorial Hospital, Brook Field Service, Costello Valente & Gentry, Lavallee Brensinger, Lawrence & Lober Electric, West River Family Dental

**HOLE SPONSORS:** Allard Lumber, Brattleboro Savings & Loan, Brunelle & Son Construction, Cersosimo Industries, Chroma Technology, Community Bank, Edward Jones, First Choice Communication, Howard Printing, J. Evans Construction, Multiview Corporation, Northeast Delta Dental, The Royal Group, Southern Vermont Podiatry, Ski Country Legal, David & April Sprague and Family, WW Building Supply

**BRONZE SPONSORS:** Baker Newman Noyes, Lawton Flooring, Leader Beverage

**FLAG SPONSORS:** Deerfield Valley News, June Dibble in memory of Phil Dibble, Doug & Cathy

DiVello, Equipe Sport, Five Maples, W&B Management in memory of Effie Chamberlin and in memory of Wally & Eleanor Lowe



*Please call 802-365-9109 or e-mail [info@gracecottage.org](mailto:info@gracecottage.org) if you'd like to join the sponsors of this tournament; your sponsorship will help Grace Cottage's Patient Care Fund.*

## Grateful patients write:

"I recently transferred my medical care to Grace Cottage and I just like the whole atmosphere there. I am beyond happy with the choice I made. Everyone shows compassion about you, makes you feel comfortable, and shows genuine care about your needs. Juliette Carr did more for me in two visits than my doctor in New Hampshire did in ten years. I'm back on track with my health, thanks to her!" – *Angela Sanville*, Newfane, VT

"I was welcomed the moment I arrived at the door of the ER. Josh and Liz were communicative, thorough, and beyond kind. Thanks to Josh's flexibility and willingness to speak with my doctor from my home state, I was able to schedule a follow-up and subsequent surgery quickly, and discharge from the ER in a reasonable time. I can't thank Grace Cottage enough. I'm so grateful for your care!" – *Elaine Flynn*, Hanson, MA



# 73<sup>RD</sup> ANNUAL FAIR DAY

Saturday, August 5, 2023

Townshend Common, 9 a.m. – 3 p.m.  
Free Admission | Free Parking | Free Entertainment

It's time to start looking around for the items that were once your treasures, but now need a new home, and an opportunity for someone else to cherish them! It might be jewelry, a coffeepot, a set of dishes, a piece of furniture (not upholstered, please), books, drinking glasses or mugs, toys, games, or "soft goods" such as linens and tablecloths (if they are still in their original sealed packaging).

Those of us who have been at past Fair Days can easily conjure up fond memories of the watermelon, fried dough, ice cream, hot dogs, hamburgers, corn on the cob, and all the other scrumptious food. We can almost taste that thirst-quenching lemonade. And of course, the Pie Booth and the Gourmet Booth are always big-time favorites. The Christmas Booth will bring us Christmas in August again this year. The White Elephant Booth will have an enormous collection of everything from flatware and pots & pans to extraordinary items, and everything in between. The Jewelry booth will have a beautiful assortment of all types of jewelry and accessories. Plus, we can sit ourselves down under the Auction Tent and bid to our heart's content. WE HAVE A 1940 RED & BLACK CHEVY TRUCK ON THE AUCTION BLOCK and it's a beauty!! And in addition to all that, we will have activities and offer pony rides for the kids again this year.

Now that we have taken a trip around the Common, hitting some of the attractions, I'll remind you how Fair Day works: We start planning in January with the Chairperson Committee Meeting. The Committee is made up of a few Grace Cottage employees who give up their lunchtime to meet, and a few of us volunteers. All are willing to do whatever it takes to make Fair Day a success. We have a list of tasks to accomplish to start the ball rolling, and we're well on our way by June.

Now, over to YOU!

**First: Donations.** We are now accepting items to sell at Fair Day. All donations must be vetted to ensure that one man's trash doesn't become Fair Day's trash. White Elephant items are going into my barn again this year. If my car is in my driveway next to the Catholic Church in Townshend, I am accepting White Elephant donations. For larger items like furniture, please call (802) 365-9109 to arrange delivery Monday through Friday during regular business hours. We ask that donations be delivered, if at all possible, but please do not leave donations without talking to us first.

**Second: Volunteers.** We need anyone and everyone who can help. If you can sort, move, or organize items in the weeks before the Fair, we would love to have you. If you are available Friday August 4th, Saturday, August 5th, and/or Sunday, August 6th, just let me know. Any amount of time you can give us (whether it's an hour, a few hours, several hours, or all day, any day, or every day!) will help make Hospital Fair Day the success we need it to be.

**Third: Come and enjoy Hospital Fair Day.** Spend time visiting with the people you haven't seen for a long time. Poke around to find wonderful things just for you or your friends and family. Eat everything that strikes your fancy. Spend every dollar you can to help support our fabulous little Grace Cottage Hospital!! Our community hospital relies on our support to remain independent and to continue to care for patients. All proceeds of Hospital Fair Day this year will benefit the Grace Cottage Family Health clinic.

— Eileen Fahey, Fair Day Chairperson

thequeenoftownshend@gmail.com | (802) 365-4030



## HOSPITAL FAIR DAY AUCTION



As anyone who has been to Hospital Fair Day during the past 72 years knows, a huge highlight is the All-Day Auction, for which we begin collecting items many months in advance of the Fair. This year, in addition to furniture, art, antiques, household items, china, crystal, tools, and many other assorted items, we will also offer a beautiful 1940 Chevy Truck (see photos and related story).

We want to thank Auctioneer Brian Tebo of Bennington, VT, for donating the time and talent of Heart Felt Antiques and Auction Services again this year. In order to streamline registration, new bidders are invited to send your name, address, and phone number to [info@gracecottage.org](mailto:info@gracecottage.org), and we'll sign you up in advance. If you signed up for the Auction on the Townshend Common last year, you do not have to sign up again – just come to the front desk at the Auction to get your bidding number (which will be the same

number as last year). This way, on Fair Day, the registration process will be much quicker – all you'll need to do is pick up your number and start bidding right away!

**Fair Day T-Shirt Quilt:** This exquisite, one-of-a-kind quilt will be auctioned at Fair Day, just after the Chevy Ford Truck is auctioned at 2 p.m. (see next page). Every Fair Day t-shirt from 1999-2023 is displayed in this collector's item, a queen-size quilt suitable for hanging, filled with Fair Day nostalgia. A big thanks to Deb Record of Newfane who made two quilts for Fair Day this year, one for the Fair Day raffle and this T-shirt quilt for the Auction.



# 1940 Chevy Truck Could Be Yours!



Thanks to very generous Grace Cottage supporters, we have a 1940 Chevy ½ ton, 6 cylinder (3 gears) pickup truck to auction at Hospital Fair Day. The donors drove it up to Vermont when they purchased the truck in Rhode Island 13 years ago; the engine has 5,000 miles on it. You may have seen the truck occasionally in downtown Newfane! As with Ron Allbee's 1941 Chevy pickup truck that we auctioned at Fair Day last year, there will be a minimum bid of \$30,000, and the truck will be auctioned at 2:00 p.m. on Saturday, August 5th on the Townshend Common. It's a beauty!



"This vehicle has provided much pleasure during its time with us, and we wish for her usefulness to continue through this gift to benefit Grace Cottage."

— *Mike & Jody McAssey*, Newfane, VT

## Grateful patients write:

"I visited your emergency room and was really impressed with the whole experience. The staff are wonderful, and everything flowed as easily and quickly as could be expected. A referral to a specialist was done right away. And importantly, I received a printout of what I needed to know and do. It was VERY CLEAR how essential Grace Cottage is to our lives and how very fortunate we are to have it."

— *Charli Kilian*, Londonderry, VT

"During the time I've been at Grace Cottage, I've never received so much encouragement in my life! Everyone is so friendly, entirely polite, and very optimistic about my progress. It's been a revelation to me. I'm 84 and I've only ever been in a hospital once before, but I can tell you and everyone that Grace Cottage is exceptional."

— *Shirley Capron*, North Walpole, NH

"When I fell while delivering Meals on Wheels in May, 2022, I finished up my work and got myself to Grace Cottage's Emergency Department, knowing they would take care of me. What a relief! I was immediately taken care of as soon as I walked into the emergency entrance and they took wonderful care of me. After receiving stitches and a cast, I drove home!"

— *Jean Momaney*, Dummerston, VT

"After my surgery, they asked me where I wanted to go to recover. 'Grace Cottage!' I answered. They asked me why. I told them, 'Because they have wonderful food!'"

— *Len Bugel*, South Londonderry, VT

"I knew that Grace Cottage was a great place before we needed it for Phil's care, but I never knew how great until we had to be there in the Loving Care room. Allowing me to be with my husband 24 hours of the day, and allowing my family to come anytime was wonderful. Dr. Arnold was always there for me and she kept Phil comfortable. The nurses and the kitchen crew were all so kind. There is just no place like Grace Cottage."

— *June Dibble*, Wardsboro, VT

# The Gift of Giving



## Gundela Weindl

Following the sale of the Newfane Inn, Grace Cottage has recently received a generous bequest from the estate of Gundela Weindl. Gundi died on January 11, 2020, eight years after the death of her husband, Eric.

Born in Lutterhausen, Germany, Gundi moved to the U.S. in 1963, where she met Eric, a chef at the Stratton Mountain Inn. They married in 1968 and, together, ran a restaurant at the Avalanche Lodge in Manchester, VT. In 1970, they became the proprietors of the Old Newfane Inn (then owned by Christoph Stumpe Castou), and they owned and operated the inn and restaurant from 1978-2011.

Eric and Gundi were well known to generations of families in this area and all over the world, and are greatly missed, but their generosity to Grace Cottage leaves an important legacy.



## Shirley Sanders

We recently received a bequest from the estate of Shirley Sanders who, along with her husband, Henry "Hank" Sanders, was a longtime benefactor of Grace Cottage. A native of Hampton, VA, Shirley (Reese) attended Mary Washington College, and was formerly an editorial assistant at MIT in Cambridge, MA. Shirley and Hank

resided in Darien, CT, for decades, and spent as much time as possible at their beloved second home in West Townshend, VT. Prior to Hank's death in 2008, the couple had moved to Portsmouth, NH; after she was widowed, Shirley relocated to Riverwoods in Exeter, NH, until her death in June, 2020.

Shirley and Hank Sanders' legacy will live on at Grace Cottage. Hank was a Director of the Grace Cottage Foundation Board for more than 10 years, and Shirley volunteered at many of Grace Cottage's events. They are both greatly missed.



## Gifts of Real Estate

Have you ever considered a donation of real estate to Grace Cottage? Real estate is one of the most financially beneficial types of gifts for donors. By donating your primary home, vacation home, undeveloped land, or commercial property to Grace Cottage, not only do you leave a legacy that will continue well into the future, helping us to care for our patients, but you will also enjoy a variety of tax benefits.

One type of real estate gift to a charity is called an Enhanced Life Estate Deed. Also called a "Lady Bird Deed" (after President Lyndon Johnson's wife, who encouraged Congress to pass this law), an Enhanced Life Estate Deed allows the owner of real estate to name a grantee who will inherit their property after their death. This simple deed transfers the grantor's interest in the property without having to go through the Probate process. In late 2022, an area resident approached Grace Cottage about the possibility of an Enhanced Life Estate Deed to her modest home, and we gratefully accepted. The paperwork, drawn up by her attorney, was simple and quick. Upon this person's death, the home will become the property of Grace Cottage and we will sell it, for the benefit of Grace Cottage; meanwhile, we hope that this donor, and all of our donors, have long and healthy lives!

If you'd like to learn more about the potential tax benefits of donating your home or property to Grace Cottage, while maintaining complete confidentiality, call Andrea or Charma at 802-365-9109 or e-mail us at [info@gracecottage.org](mailto:info@gracecottage.org).

## Donations Were Recently Received In Honor Of:

Linda Bastian ♦ Doug DiVello ♦ Grace Cottage Volunteers ♦ Dick Jackson ♦ Brian Mayher ♦ Jari Priessman  
Andrea Seaton ♦ Andrew Semegram ♦ Dr. Timothy Shafer ♦ Carrie Zahacewski

## Memorial Gifts

*Donations have been received between January 20-May 8 in memory of the following individuals:*

Hank & Phyllis Anderson ♦ Farren Bratton ♦ Susan W. Bristol ♦ Beryl Berry Brown ♦ Elizabeth Brown ♦ Gladys Brown  
Kevin Brown ♦ David Brownell ♦ Dr. John & Nancy Chard ♦ Raymond & Charlotte Clayton ♦ Chris Coleman  
Phil Coleman ♦ Trish Gale DeMarco ♦ Phil Dibble ♦ Andrew Dolan ♦ Lilian Ebeling ♦ Brian A. Evans ♦ Shaun Fosburgh  
Dawn Franceschetti ♦ Wetzel & Gladys Gale ♦ Henry Grabowski ♦ Val & Betty Guimond ♦ Alexander Hadden  
Ellen Hamilton ♦ Lee Hines ♦ George & Thelma Holden ♦ George Holden, Jr. ♦ Stan Holt ♦ Edward Hurley  
Hope Johnson ♦ Joel Johnson ♦ Stanley Knapp ♦ Warren Kronmeyer ♦ Richard Lapan ♦ Christine Leigus ♦ Helen Lewis  
Laurie Linley ♦ Richard Lucier ♦ Jeanne Marion ♦ Bruce & Ruth McGray ♦ Frank & Betty Merrill ♦ Francis Momaney, Sr.  
Phil Moriarty ♦ Lisa Young Noble ♦ Dr. Carlos Otis ♦ Hannes Overgard ♦ Bob Phelps ♦ Betsey Reagan  
Travis & Nora Robinson ♦ Richard Russo ♦ Hank Sanders ♦ Abbi T. Stevens ♦ Shepard & Charlotte Stone  
Catherine N. Stratton ♦ Michael Sinclair Sutton ♦ William & Leona Tabell ♦ Mary Torrey ♦ Len & Bernice Welch

### FY22 ANNUAL DONOR REPORT CORRECTION

♦ Lynette Hamilton in memory of Ellen Hamilton ♦

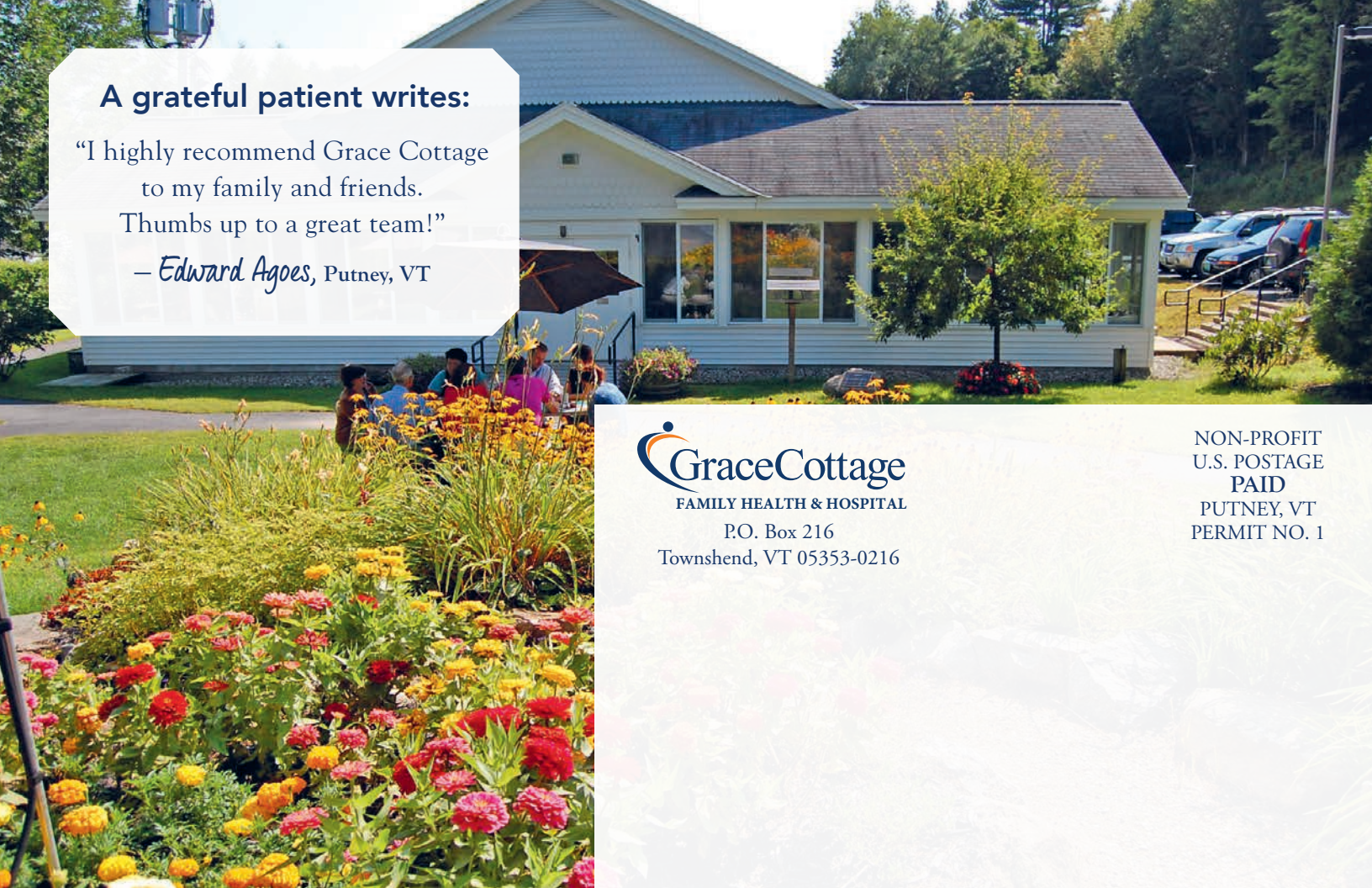
We extend our sympathy to the families and friends of these loved ones, and our appreciation to those who have given in their memories.  
When memorial gifts are received by Grace Cottage, the donor is thanked, and the next of kin is notified of the gift. (The amount given is never divulged.)



### A grateful patient writes:

"I highly recommend Grace Cottage to my family and friends. Thumbs up to a great team!"

— *Edward Agoes*, Putney, VT



 **GraceCottage**  
FAMILY HEALTH & HOSPITAL  
P.O. Box 216  
Townshend, VT 05353-0216

NON-PROFIT  
U.S. POSTAGE  
**PAID**  
PUTNEY, VT  
PERMIT NO. 1

## A Very Happy Ending!



"When we welcomed our beautiful son, Atlas, to the world on August 31st, joining our 2-year-old daughter, Willow, my wife and I couldn't have been happier. Our family was complete.

In mid-November, Atlas suddenly got very sick. When he started having terrible trouble breathing, my wife and I brought him to Grace Cottage (where I have worked

in the Information Services department for the past 5 years, so I know firsthand what a great place it is). The Emergency Department staff immediately recognized that he had Respiratory Syncytial Virus (RSV), put him on a nasal cannula, and called for

an ambulance to take him to Dartmouth Hitchcock Medical Center in New Hampshire. It was a long week up at Dartmouth, with some very scary moments, but Atlas is such a fighter.

What was overwhelming to my wife, Breanna, and me, and what helped us through the worst week of our lives, was the support and loving care that we got from employees at Grace Cottage and people in our town, and beyond. We feel very lucky and thankful to be part of this community. We want to thank everyone who reached out to us in so very many ways. We are blessed."



*Tyler Madison*, Newfane, VT

### A grateful patient writes:

"The ER staff is so caring and so friendly and there is usually not much of a wait. Nothing could be improved. I absolutely loved the nurse and doctor who treated me." — *Christine Hudson*, Wardsboro, VT